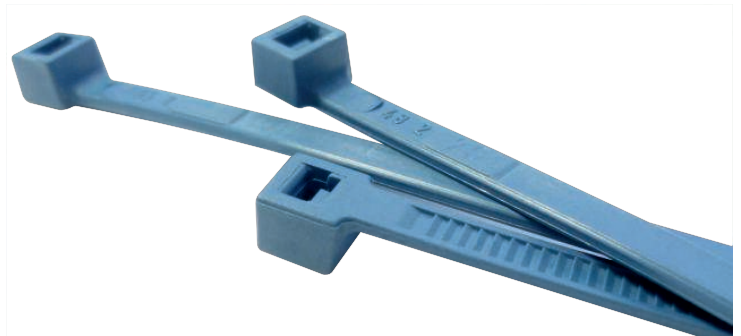




Product Technical Data Sheet - Metal Detectable Cable Ties

Recommended for use in food, pharmaceutical and chemical industry. Metal Detectable Ties include metal content spread throughout the tie enabling them to be located by standard metal detectors. The blue colour assists in visual detection and reduces the risk of contamination.



Material:

Nylon self extinguishing UL94 HB

Temperature Range:

-25°/+100°C

Water absorption:

Up to 8% when immersed

Non toxic, recyclable. Halogen free. Colour: Blue (RAL 5002)

Part Number	Dimensions (mm)		Max Bundle Diameter (mm)	Minimum Loop Tensile strength (N)
	Length	Width		
MDT100	100	2.5	24	100
MDT140I	140	3.5	36	200
MDT200	200	4.5	51	280
MDT280	280	4.5	76	280
MDT380	380	4.5	110	280
MDT360H	360	7.5	100	550

Partex Marking Systems (UK) Ltd

61-64 Station Road, Coleshill, Birmingham B46 1JT

Tel: 01675 463670 Fax: 01675 463520 Email: sales@partex.co.uk